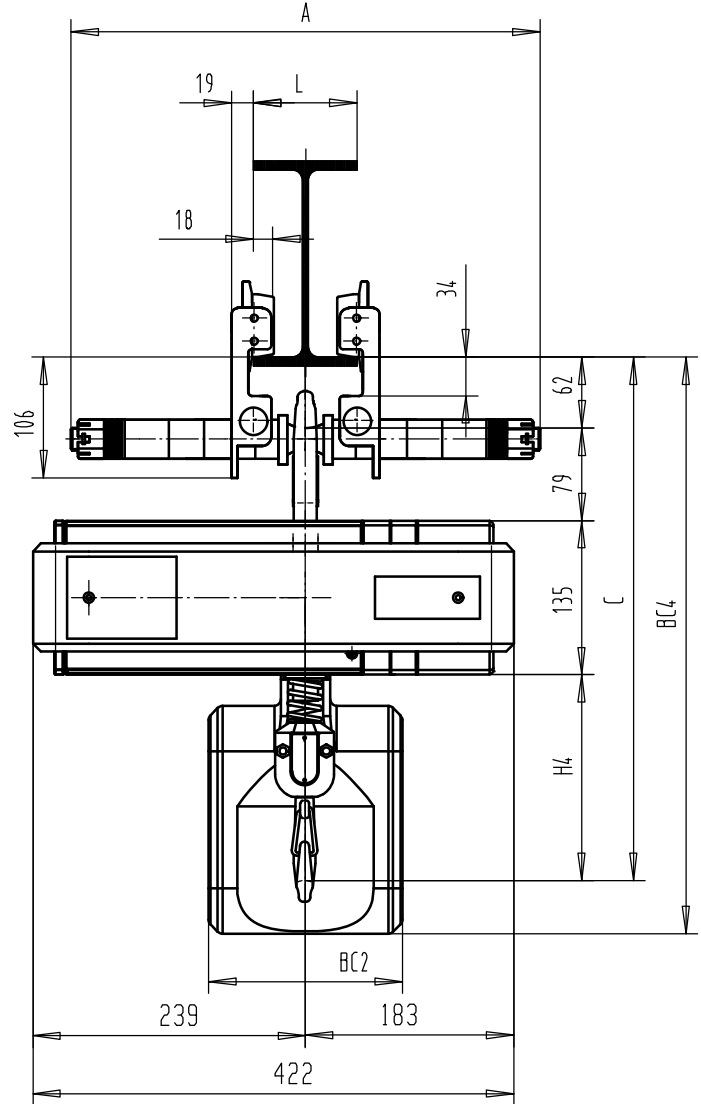
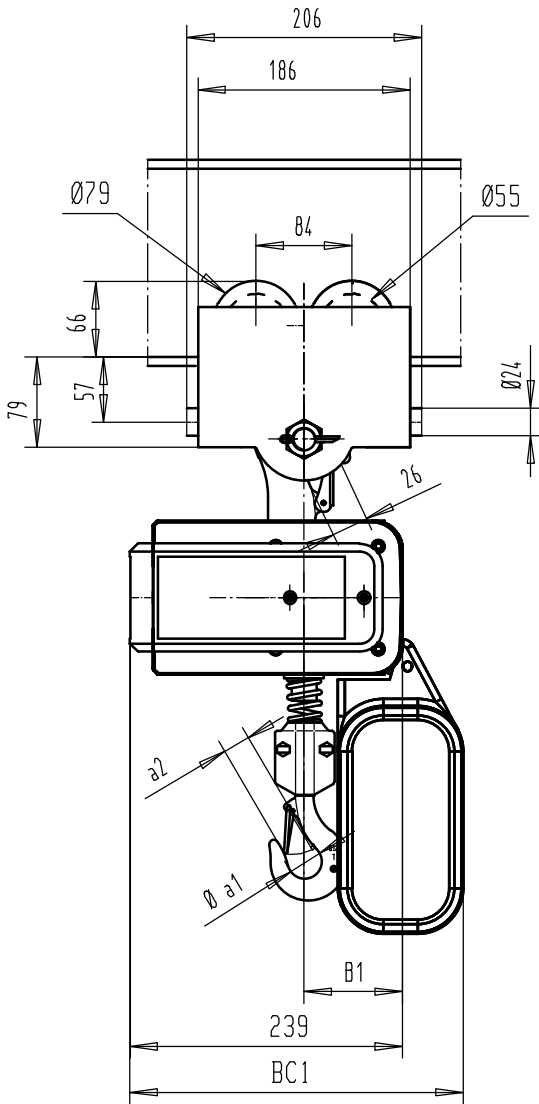


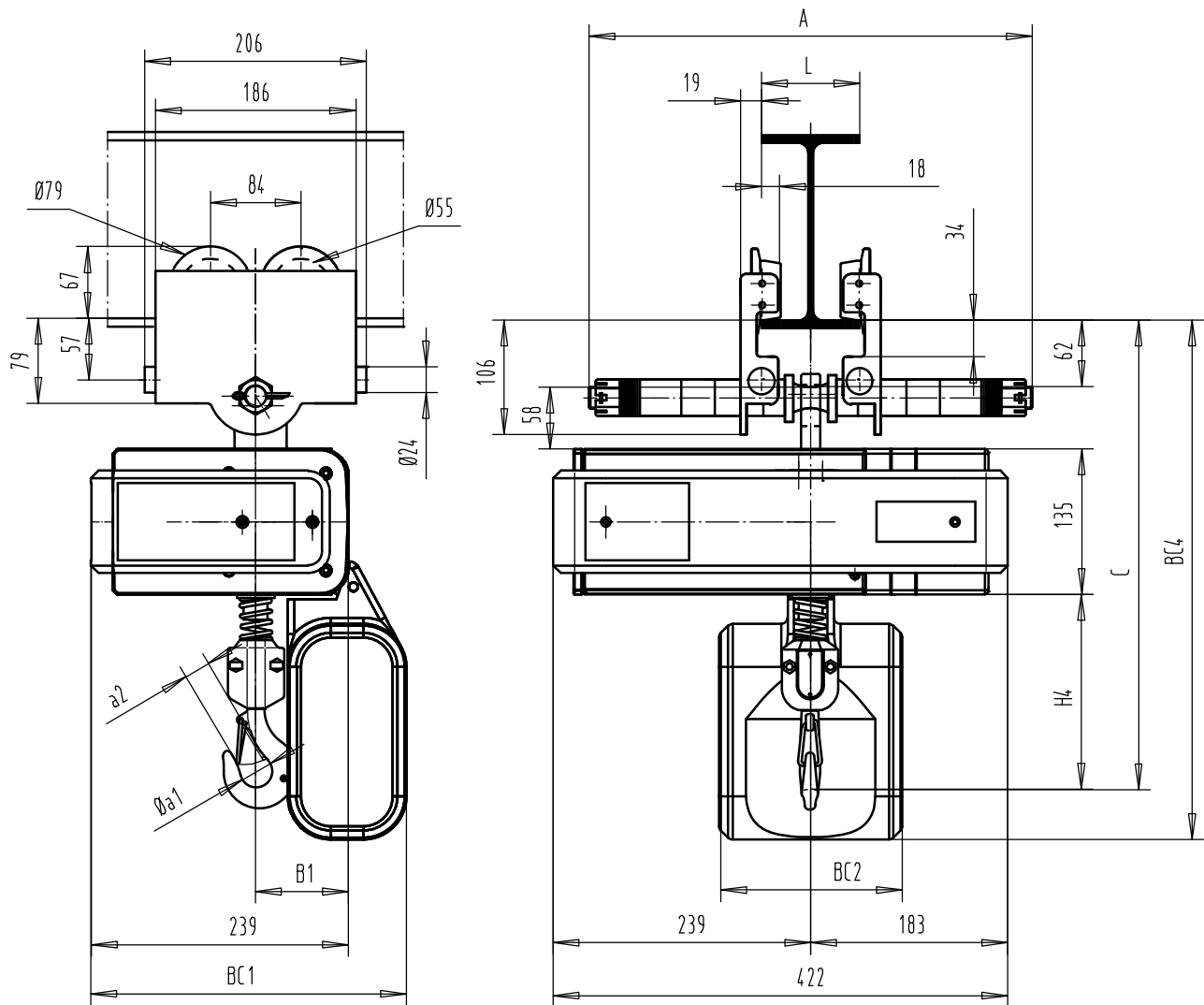
Mit Schiebefahrwerk FND 500 kg (Quer zur Kettzugachse)
 Hooked to FND Manual trolley 500 kg (Perpendicular version)
 Accroché à Chariot manuel FND 500 kg (Version perpendiculaire)



| Chain bag capacity | H4 | C | B1 | BC4 | | | | BC1 | | | | BC2 | | | | Ø a1 | a2 | kg |
|--------------------|-----|-----|-----|-----|------|------|------|-----|------|------|------|-----|------|------|------|------|----|----|
| | | | | <8m | <16m | <30m | <50m | <8m | <16m | <30m | <50m | <8m | <16m | <30m | <50m | | | |
| 1 Brin/1 Fall | 179 | 455 | 91 | 517 | 577 | 642 | 642 | 300 | 340 | 335 | 335 | 170 | 160 | 150 | 320 | 30 | 20 | 31 |
| 2 Brins/2 Falls | 231 | 507 | 112 | 517 | 577 | 642 | 642 | 300 | 340 | 335 | 335 | 170 | 160 | 150 | 320 | 36 | 26 | 34 |

| | A |
|-----------|-----|
| 50<L<200 | 303 |
| 188<L<310 | 411 |

Mit Schiebefahrwerk FND 500 kg (Quer zur Kettenzugachse)
Fixed to FND Manual trolley 500 kg (Perpendicular version)
Accouplé à Chariot manuel FND 500 kg (Version perpendiculaire)



| Chain bag capacity | H4 | C | B1 | BC4 | | | | BC1 | | | | BC2 | | | | Øa1 | a2 | kg |
|--------------------|-----|-----|-----|------|-------|-------|-------|------|-------|-------|-------|------|-------|-------|-------|-----|----|----|
| | | | | <8 m | <16 m | <30 m | <50 m | <8 m | <16 m | <30 m | <50 m | <8 m | <16 m | <30 m | <50 m | | | |
| 1 Brin/1 Fall | 179 | 434 | 91 | 487 | 547 | 612 | 612 | 300 | 340 | 335 | 335 | 170 | 160 | 150 | 320 | 30 | 20 | 31 |
| 2 Brins/2 Falls | 231 | 486 | 112 | 487 | 547 | 612 | 612 | 300 | 340 | 335 | 335 | 170 | 160 | 150 | 320 | 36 | 26 | 34 |

| | A |
|-----------|-----|
| 50<L<200 | 303 |
| 188<L<310 | 411 |