

## 73 NORMAL HEADROOM HOIST NC, REEVING: 04

### Hoisting speed (m/min)

Load kg	Class Fem/ISO	E gear + P3/T3 motor		F gear + P3/T3 motor		H gear + P4/T4 motor	
		High	Low	High	Low	High	Low
4000	3m/M6	4	0,7	5	0,8	8	1,3
5000	2m/M5	4	0,7	5	0,8	8	1,3

### Hoist dimensions

HOL m	Length code	M1 mm	H2 mm	Weight kg
6	B	467	49	470
9	C	567	73	490
12	D	667	97	530
15	E	787	121	540

### Motor dimensions

Motor	P3	P4	T3	T4
M2 (mm)	597	690	507	610
Weight ( kg)	35	53	22	45

### Trolley dimensions

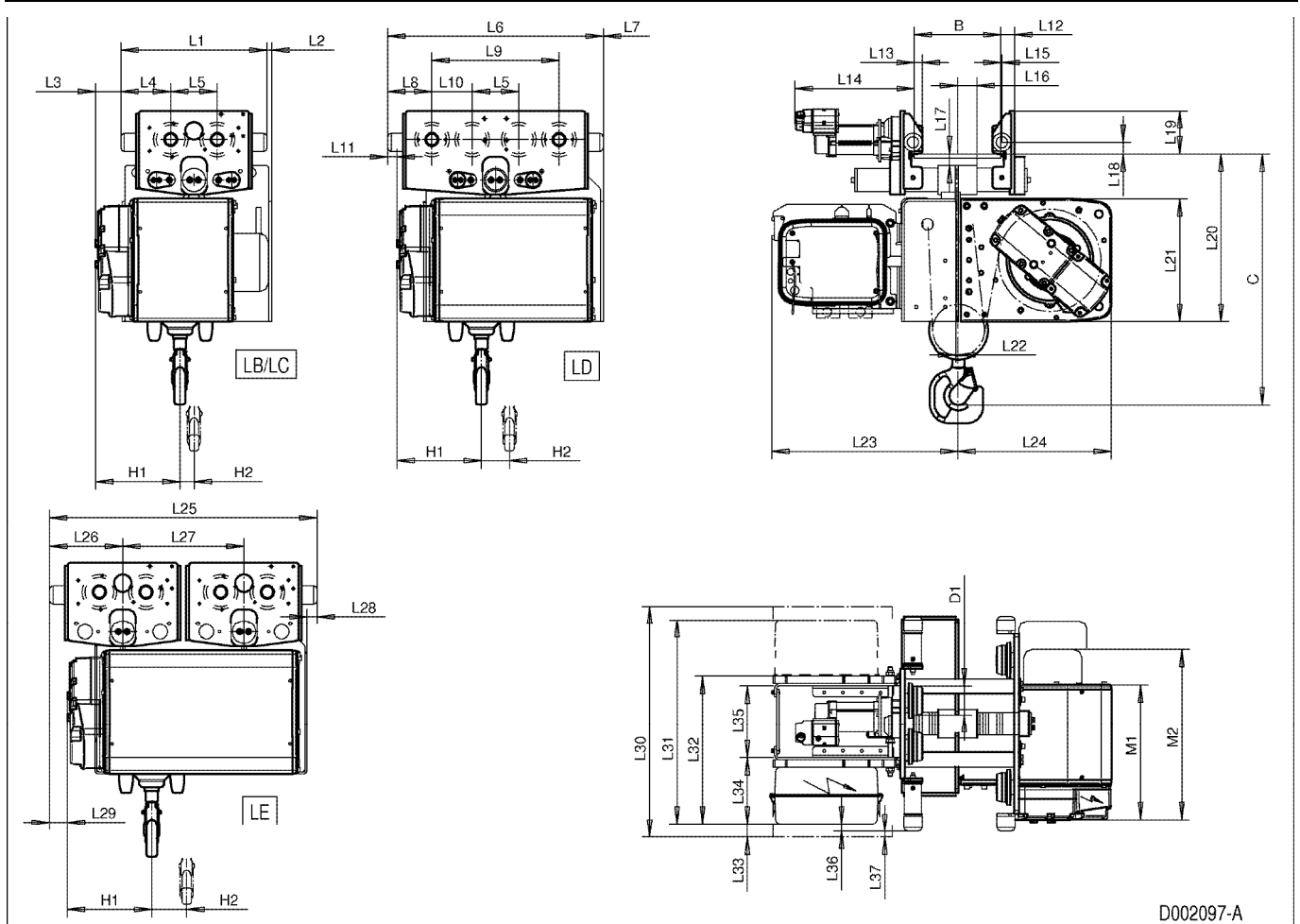
B min	B max	C	D1 (Ø)	H1							
80	450	870	100	292							
L1	L2	L3	L4	L5	L6	L7	L8	L9	L10	L11	L12
506	16	88	172	161	746	0	153	440	139	33	48
L13	L14	L15	L16	L17	L18	L19	L20	L21	L22	L23	L24
28	412	4	68	40	40	150	581	426	4	644	531
L25	L26	L27	L28	L29	L30	L31	L32	L33	L34	L35	L36
926	253	420	35	62	800	706	511	47	228	250	27
L37	L38										
20	34										

D002097\_A  
062143

Note: Weight calculated with P3 motor, when B=300mm.

Note: All dimensions in mm.

Note: L32 with one cubicle only, L31 with optional cubicle, L30 with two RST cubicles.



D002097-A