

72 NORMAL HEADROOM HOIST NC, REEVING: 02, CURVED TRACK

Hoisting speed (m/min)

Load kg	Class Fem/ISO	E gear + P3/T3 motor		F gear + P3/T3 motor		H gear + P4/T4 motor	
		High	Low	High	Low	High	Low
2000	3m/M6	8	1,3	10	1,7	16	2,7
2500	2m/M5	8	1,3	10	1,7	16	2,7
3200	1Am/M4	8	1,3	-	-	-	-

Hoist dimensions

HOL m	Length code	M1 mm	M3 mm	H2 mm	Weight kg
12	B	467	523	98	470
18	C	567	523	147	490
24	D	667	523	198	530
30	E	787	523	258	540

Motor dimensions

Motor	P3	P4	T3	T4
M2 (mm)	597	690	507	610
Weight (kg)	35	53	22	45

Trolley dimensions

B min	B max	C	D1 (Ø)	D2 (Ø)							
90	350	995	63	100							
L1	L2	L3	L4	L5	L6	L7	L8	L9	L10	L11	L12
1029	253	95	62	44	412	31	2	150	40	42	742
L13	L14	L15	L16	L17	L18	L19	L20	L21	L22	L23	L24
428	2	662	513	800	706	511	47	228	250	42	125

D003840_A
062168

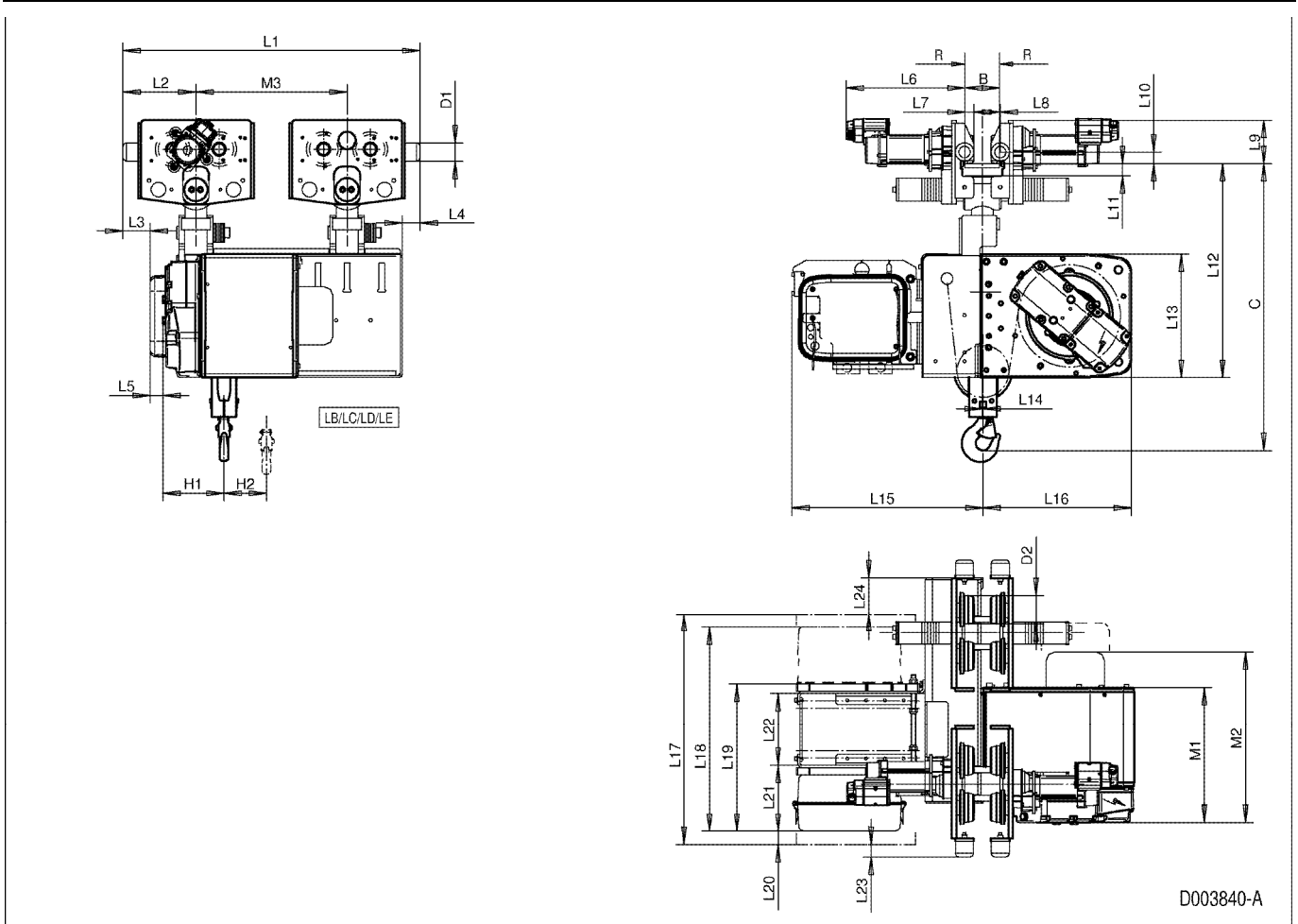
Track radius

B	R min
90 - 109	2500
110 - 119	2000
120 - 350	1500

Note: Weight calculated with P3 motor.

Note: All dimensions in mm.

Note: L19 with one cubicle only, L18 with optional cubicle, L17 with two RST cubicles.



D003840-A