

## 70 NORMAL HEADROOM HOIST NB, REEVING: 04

### Hoisting speed (m/min)

Load kg	Class Fem/ISO	F gear + P1/T1 motor		F gear + P2/T2 motor		G gear + P2/T2 motor		H gear + P3/T3 motor	
		High	Low	High	Low	High	Low	High	Low
1600	3m/M6	5	0,8	5	0,8	6,3	1,1	8	1,3
2000	2m/M5	5	0,8	5	0,8	6,3	1,1	8	1,3
2500	3m/M6	-	-	5	0,8	6,3	1,1	8	1,3
3200	2m/M5	-	-	5	0,8	6,3	1,1	8	1,3

### Hoist dimensions

HOL m	Length code	M1 mm	H2 mm	L4 mm	Weight kg
6	A	431	45	68	260
9,5	C	561	72	-62	300

### Motor dimensions

Motor	P1	P2	P3	T1	T2	T3
M2 (mm)	498	558	588	498	498	498
Weight ( kg)	21	31	35	22	22	22

### Trolley dimensions

B min.	B max.	C	D1(Ø)	D2(Ø)	H1						
80	450	690	63	100	255						
L1	L2	L3	L4	L5	L6	L7	L8	L9	L10	L11	
17	506	161	412	103	28	45	40	150	376	531	
L12	L13	L14	L15	L16							
619	448	531	311	1061							

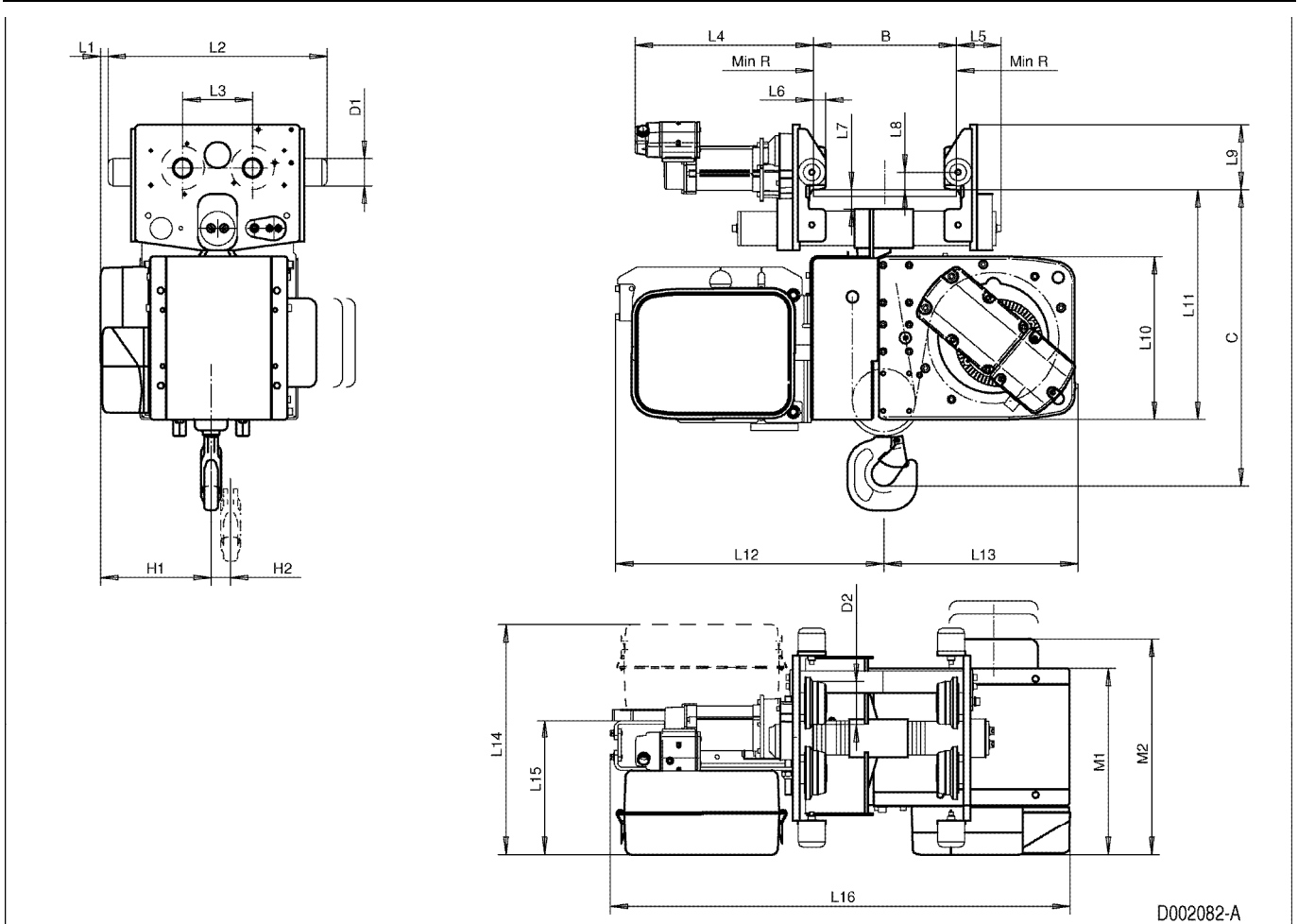
D002082\_A  
062130

### Minimum track radius

B	Min R
100 - 109	2500
110 - 119	2000
120 - 450	1500

Note: Weight calculated with P1, When B=300mm

Note: All dimensions in mm.



D002082-A