

## 34 DOUBLE GIRDER HOIST NF, REEVING: 2 X 02

### Hoisting speed (m/min)

Load kg	Class Fem/ISO	E gear		F gear		G gear		H gear		J gear	
		High	Low	High	Low	High	Low	High	Low	High	Low
		8	1,2	10	1,6	12,5	2	16	-	20	-
12500	3m/M6	P6/T6 motor		P6/T6 motor		P7/T7 motor		T8 motor		T9 motor	
16000	2m/M5	P6/T6 motor		P6/T6 motor		P7/T7 motor		T8 motor		T9 motor	
20000	1Am/M4	P6/T6 motor		P7/T7 motor		T8 motor		T9 motor		-	

### Hoist dimensions

HOL m	Length code	M1 mm	M3 mm	Min R mm	Max R mm	C mm	Weight kg
15,5	F	832	434	1700	2000	1231	2100
20,5	G	1022	364	2000	2400	1231	2200
27,5	H	1272	364	2000	2700	1231	2400
37,5	J	1622	389	2400	3100	1441	2650
46	K	1922	389	2700	3400	1441	2900
55,5	L	2272	414	3100	3800	1551	3200
62,5	M	2522	439	3400	4200	1551	3450
71	N	2822	489	3800	4200	1551	3750

### Motor dimensions

Motor	P6	P7	T6	T7	T8	T9
M2 (mm)	536	576	536	536	536	536
Weight ( kg)	85	105	65	71	81	92

### Trolley dimensions

D1 (Ø)	D2 (Ø)	D3 (Ø)	WB	WW min	WW max						
230	200	80	1400	55	90						
L1	L2	L3	L4	L5	L6	L7	L8	L9	L10	L11	L12
488	600	18	122,5	501,5	59	1826	720	618	88	674	726
L13	L14	L15	L16	L17	L18	L19	L20	L21			
946	939	44	218	213	1013	213	110	315			

D002332\_A  
062406

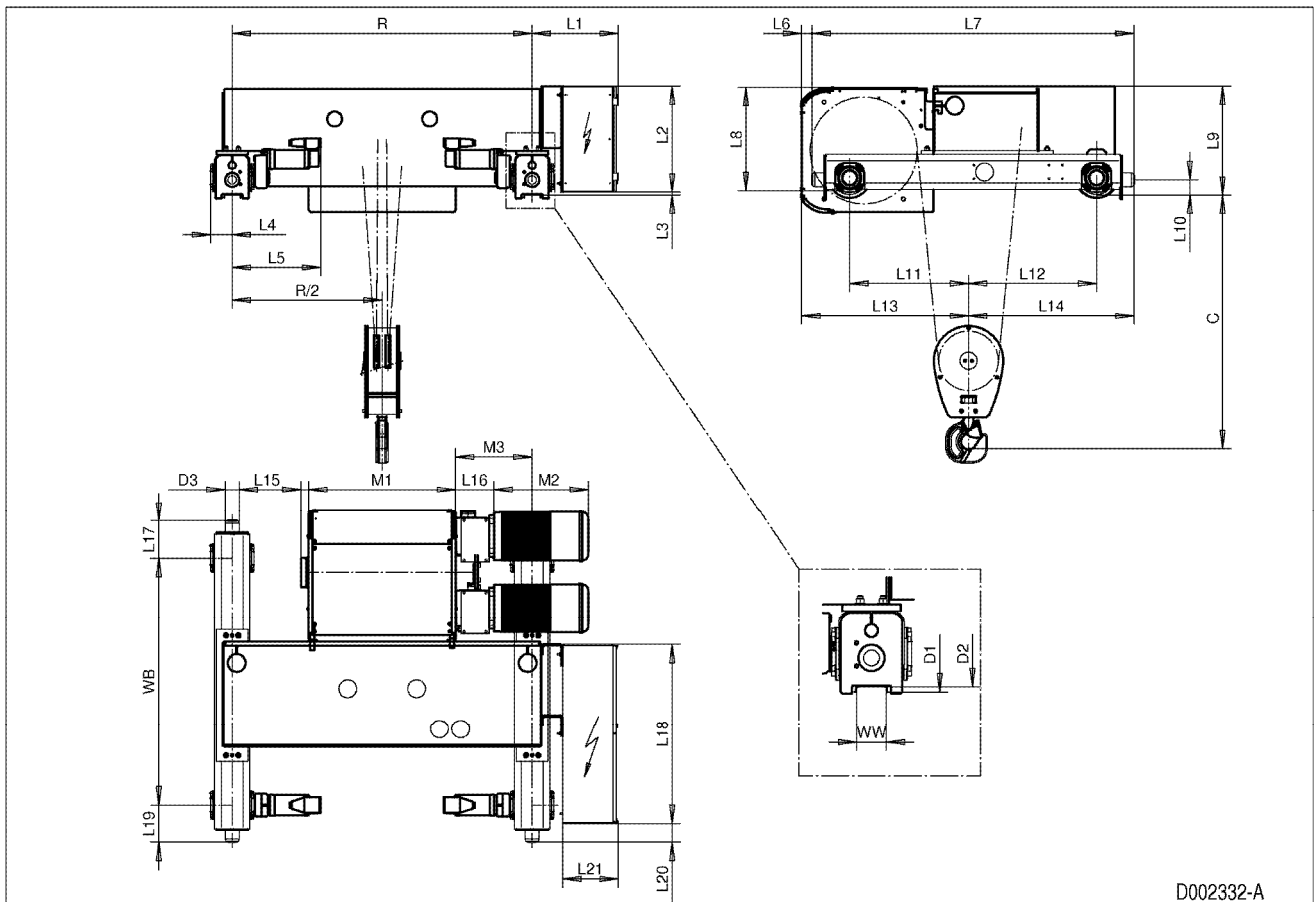
Note: Weight calculated with P6 motor.

Note: All dimensions in mm.

Note: Min R with service platform.

Note: Standard rail gauges: 1700, 2000, 2400, 2700, 3100, 3400, 3800 and 4200.

Note: M3 and weight calculated with min R.



D002332-A