

## 7 LOW HEADROOM HOIST NC, REEVING: 02

### Hoisting speed (m/min)

Load kg	Class Fem/ISO	E gear + P2/T2 motor		F gear + P2/T2 motor		H gear + P4/T4 motor	
		High	Low	High	Low	High	Low
1250	3m/M6	8	1,3	10	1,7	16	2,7
1600	2m/M5	8	1,3	10	1,7	16	2,7

### Hoist dimensions

HOL m	Length code	M1 mm	H2 mm	H3 mm	L17 mm	W mm	Weight kg
22,5	C	567	144	534	792	505	320
30	D	667	193	634	892	605	340

### Motor dimensions

Motor	P2	P4	T2	T4
M2 (mm)	567	690	507	610
Weight ( kg)	35	53	22	45

### Trolley dimensions

B min.	B max	D1 (Ø)	D2 (Ø)	H1								
100	490	63	100	115								
L1	L2	L3	L4	L5	L6	L7	L8	L9	L10	L11	L12	
122	161	258	535	554	38	3	45	240	42	427	746	
L13	L14	L15	L16									
647	551	49	52									

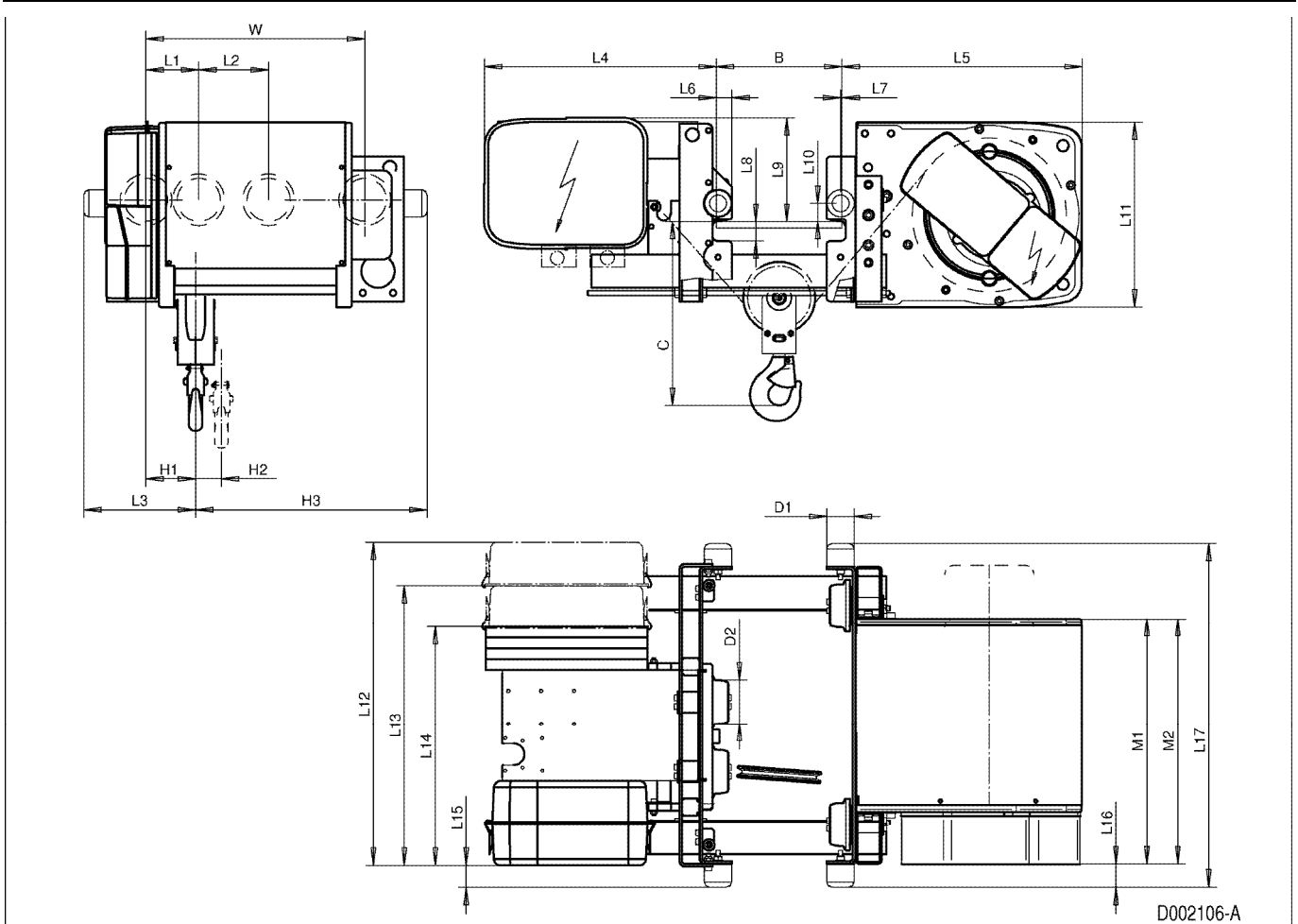
D002106\_A  
062531

### C-dimensions

B	C
100 - 250	410
251 - 300	440
301 - 350	475
351 - 400	505
401 - 450	540
451 - 490	570

Note: Weight calculated with P2 motor.

Note: All dimensions in mm.



D002106-A